

KS49C-A MIDI CONTROLLER

User Manual



■ Contents

Introduction	3
Features	3
Keyboard overview	4
Front panel	4
Rear panel.....	4
Side panel	5
Basic Functions	5
1. 'M.P.V_Mode' button.....	5
2. Slider	6
3. Edit button	6
4. OCTAVE/TRANSCOPE button	6
5. Multi-functional keyboard	6
6. MIDI OUT jack	7
7. Continual pedal jack.....	7
8. Phones jack(for model with sound source)	7
9. USB port	8
Setup	8
Making detailed settings	8
Global MIDI Channel.....	9
Key velocity curve.....	9
Pedal	10
Sliders	10
Buttons	11
Keyboard operation in Edit mode	12
Specifications	14

Introduction

Thank you for purchasing the WORLDE KS49C-A MIDI controller. To help you get the most out of your new instrument, please read this manual carefully.

In order to use the functions of this product, you'll need to adjust the settings in the application you're using. Adjust the settings as described in the owner's manual for your application.

Features

*49 note keyboard with velocity (Can be edited by WORLDE KS49C-A control editor)

*1 x Assignable Pedal Interface (Can be edited by WORLDE KS49C-A control editor)

*1 x Master Volume Slider. (Can be edited by WORLDE KS9C-A control editor)

*1 x MIDI OUT

*USB interface, adaptable to USB 2.0(FULL SPEED). Power supplied by USB.

*Possible future upgrading via USB

*With Dream Sound Source.

*WORLDE KS49C-A control editor.

Keyboard overview

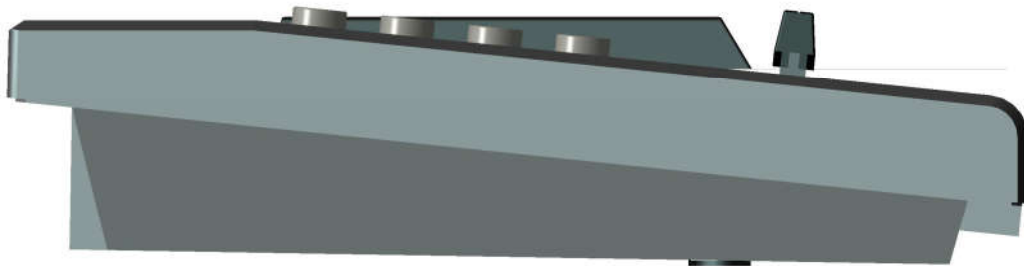
Front panel



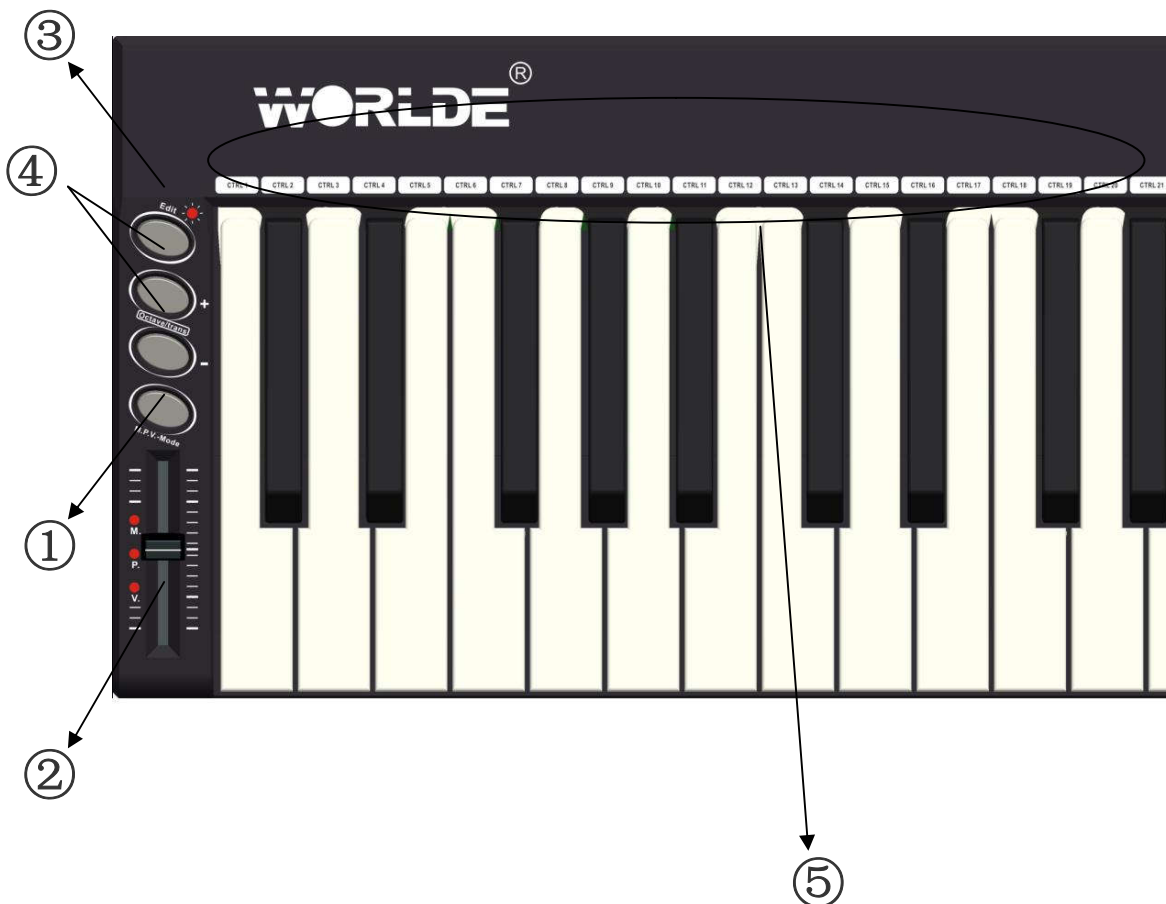
Rear panel



Side panel



Basic Functions



1. 'M.P.V_Mode' button

Switches the control mode of the slider.

2. Slider

Default as Master Volume, with the indicator of 'V' on at the same time.

The first time you press the 'M.P.V_Mode' button, it will enter into Pitch Bend Mode, with the 'P' indicator on at the same time.

The 'P' indicator is on when the slider is in the middle to indicate the median value of pitch bend.

Press the 'M.P.V_Mode' button again to enter into Modulation mode, with the 'M' indicator on at the same time.

The slider can be assigned as 135 controllers by the WORLDE KS49C-A control editor.

3. EDIT button

This switches the control mode of OCTAVE, TRANSPOSE and EDIT. The default mode is OCTAVE, with no indicator for this mode. It enters into the TRANSPOSE mode the first time you press the button, with the EDIT indicator on at the same time. When the button is pressed again it will enter into EDIT mode and the EDIT indicator starts to flicker.

4. OCTAVE/TRANSPOSE button

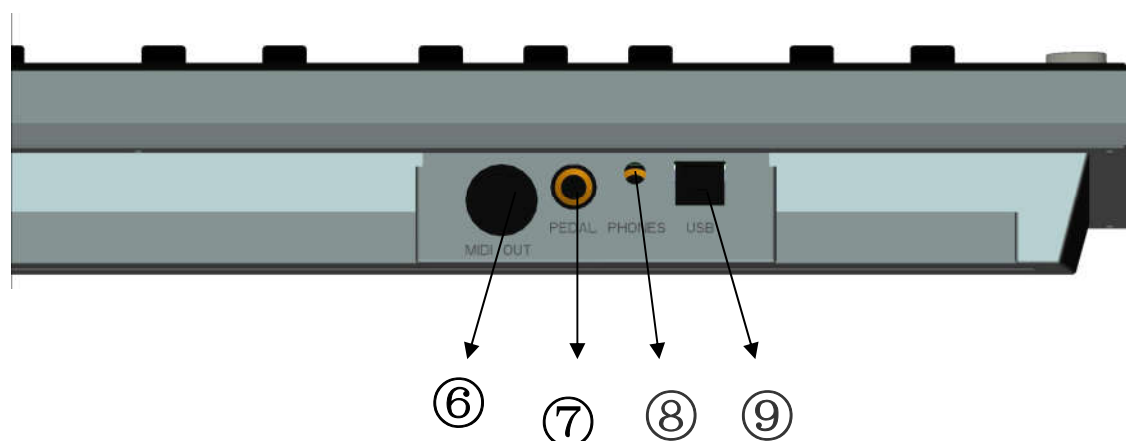
This changes the pitch by octave in OCTAVE mode; the adjusting scale for the value is -3~3. It adjusts the pitch by semi-tone in TRANSPOSE mode; the adjusting scale of the value is -12~12. These two buttons can be assigned as 135 controllers by the WORLDE KS49C-A control editor.

5. Multi-functional keyboard

It can work as multi-functional keyboard in edit mode. This function is turned on/off by the EDIT button. When it is on, the keyboard provides functions shown printed above the keyboard, including program adjustment, dual, touch sensitivity adjustment, numeric pads, etc. Take "Program" for example. The operation steps are shown as below:

- (1) Press EDIT button for two times to enter keyboard multi-function mode.
- (2) Press the “Program” button to enter program adjustment mode.
- (3) Input the program number with numeric pads, for example, press numeric pad 1 and then 2 will input program number 12.
- (4) Press Enter button to confirm.

This part of the keyboard can also be assigned as 135 controllers by the WORLDE KS49C-A control editor.



6. MIDI OUT jack

Can be connected to a compatible MIDI device.

7. Continual pedal jack

Can be assigned as 135 controllers by the WORLDE KS49C-A control editor.

8. Phones jack (for model with sound source)

A pair of stereo headphones can be connected to this jack.

9. USB port

Establishes a connection with your computer. Power is also supplied by the USB PORT.

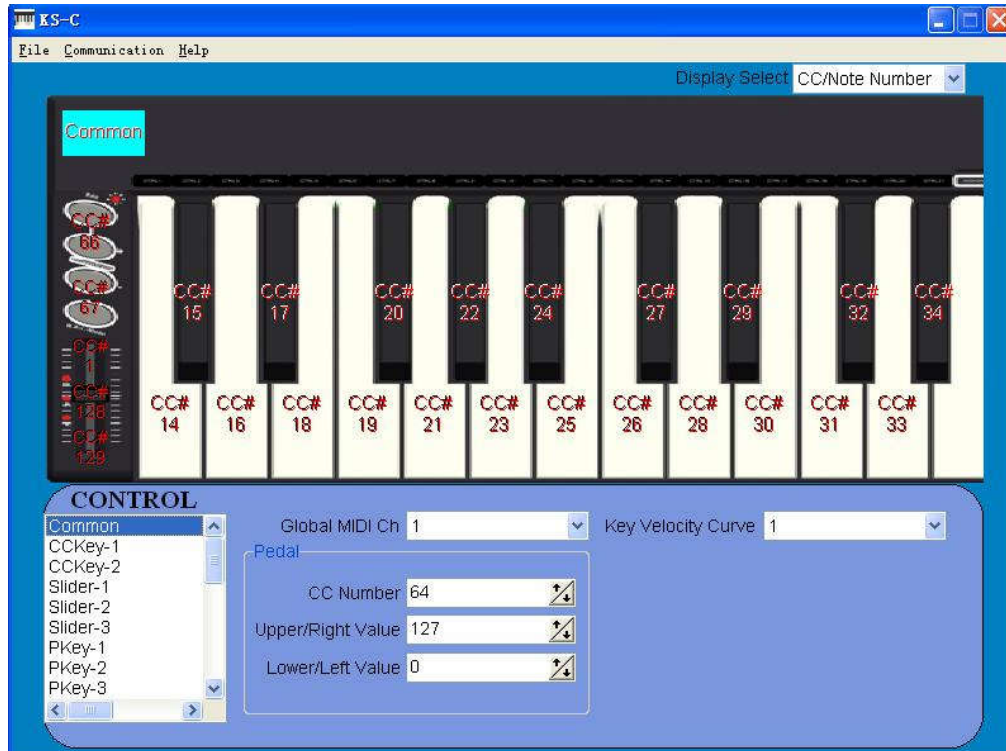
Setup

Minimum System Requirements

Windows	Mac OS
Pentium 3 800 MHz or higher (CPU requirement may be higher for laptops)	Macintosh G3*800/G4*733 MHz or higher (CPU requirement may be higher for laptops)
256MB RAM	OS X 10.3.9 with 256 MB RAM,
Direct X 9.0b or higher	OS X 10.4.2 or greater with 512 MB RAM
Windows XP(SP2)or higher (Windows 98,Me,NT or 2000 not supported)	*G3/G4 accelerator cards are not supported

Making detailed settings

The following settings cannot be edited on the KS49C-A instrument, so you need to use the WORLDE KS49C-A Control Editor on the included CD.

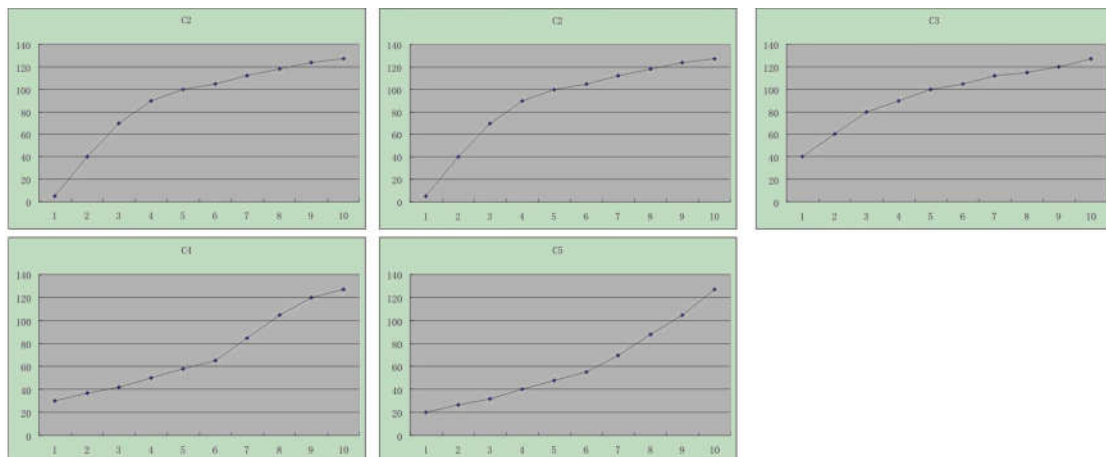


Global MIDI Channel

Global MIDI channel [1...16] This specifies the MIDI channel which KS49C-A will use to transmit note messages. This should be set to match the MIDI channel of the MIDI application that you're controlling.

Key velocity curve

It has 5 velocity curves as shown below:



Pedal

CC Number [0...127]

Specifies the control change number of the control change message that is transmitted.

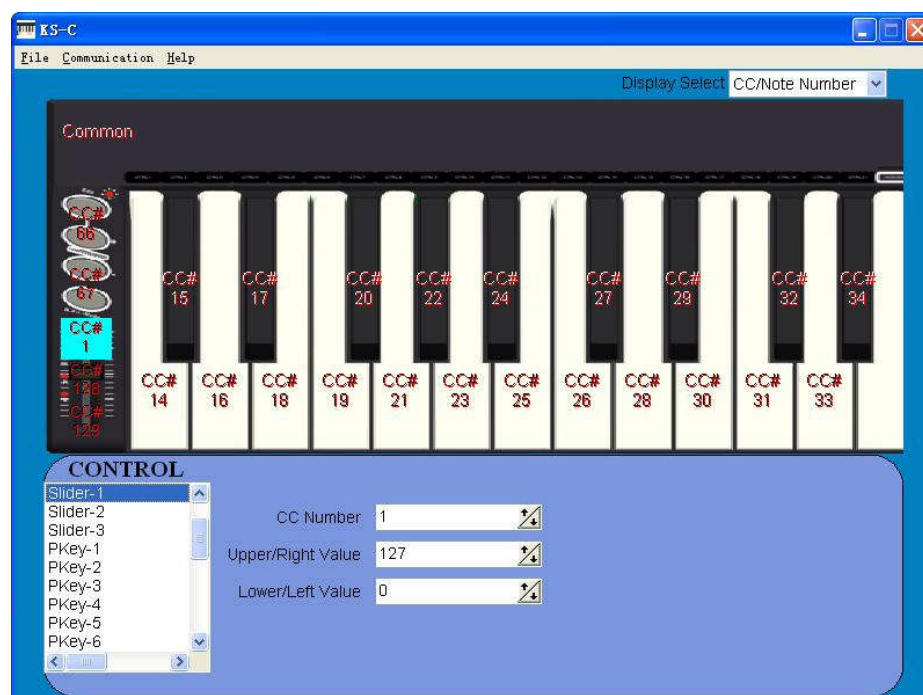
Upper/Right Value [0...127]

Specifies the value of the control change message transmitted when you press the pedal all the way downward.

Lower/Left Value [0...127]

Specifies the value of the control change message transmitted when you release the pedal.

Sliders



Operating a slider will transmit a control change message. You can enable/disable each slider, specify its control change number, and specify the values transmitted when the slider is moved fully upward or fully

downward.

C C Number [0...127]

Specifies the control change number of the control change message that is transmitted.

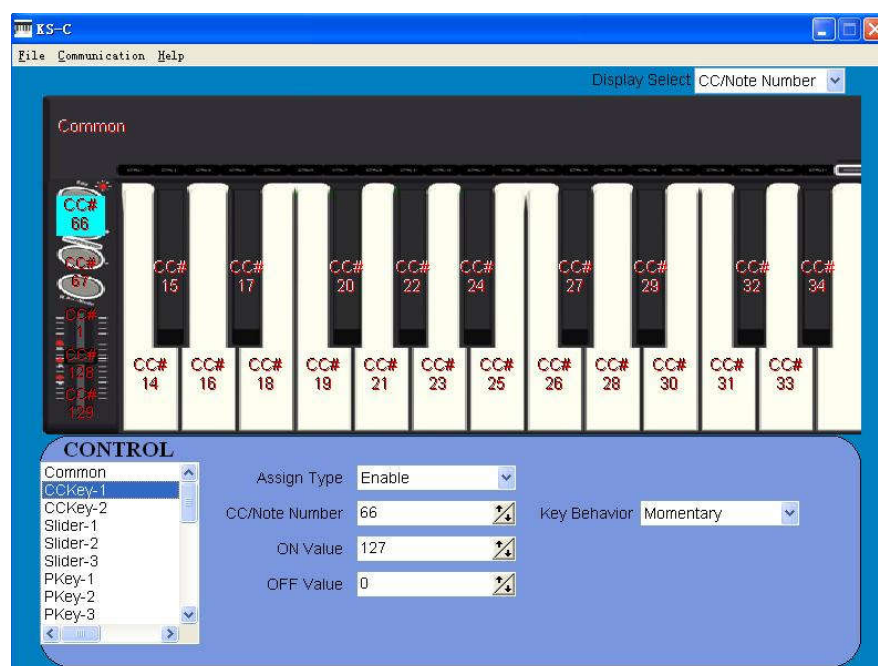
Upper/Right Value [0...127]

Specifies the value of the control change message transmitted when you move the slider all the way upward.

Lower/Left Value [0...127]

Specifies the value of the control change message transmitted when you move the slider all the way downward.

Buttons



Operating a button will transmit a control change message. You can enable/disable each button, specify its control change number, and specify the values transmitted when the button is pressed.

Assign Type [Disable/Enable]

Enables or disables the button. If you've disabled a button, pressing it will not

transmit a MIDI message.

Key Behavior [Momentary/Toggle]

Selects one of the following two modes:

Momentary Pressing the button will send a control change message with the On value, releasing the button will send a control change message with the Off value.

Toggle Each time you press the button the control change message will alternate between the On value and the Off value.

CC/Note Number [0...127]

Specifies the control change number of the control change message that is transmitted.

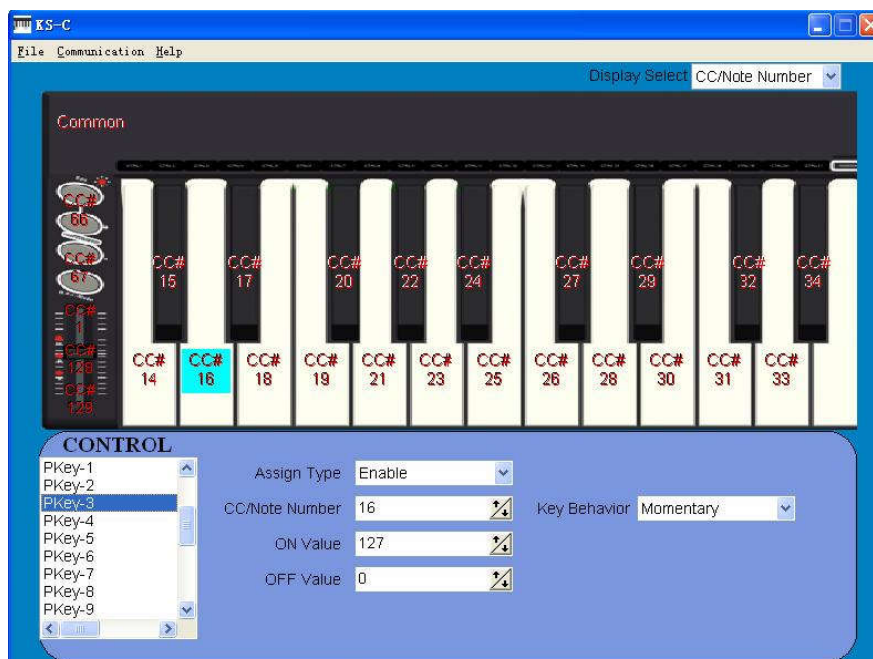
On Value [0...127]

Specifies the On value of the control change message.

Off Value [0...127]

Specifies the Off value of the control change message.

Keyboard operation in Edit mode



Twenty-one keys of the keyboard will function as independent buttons to transmit control change messages. You can specify whether each key is enabled or not, the key type, the control change number, as well as the On and Off value.

Assign Type [Disable/Enable]

Enables or disables the key. If a key is disabled, operating that key will not transmit a MIDI message.

Key Behavior [Momentary/Toggle]

Selects one of the following two modes:

Momentary Pressing the key will send a control change message with the On value, releasing the key will send a control change message with the Off value.

Toggle Each time you press the key the control change message will alternate between the On value and the Off value.

CC/Note Number [0...127]

Specifies the CC number of the control change message that will be transmitted.

On Value [0...127]

Specifies the On value of the control change message.

Off Value [0...127]

Specifies the Off value of the control change message.

Specifications

Connectors: USB connector

Power supply: USB bus power mode

Current consumption: 100 mA or less

Dimensions (W x D x H): 28.27 x7.68 x1.97 inches / 718 x 195 x 50 mm

Weight: 63.5 oz / 1800 g

Included items: USB cable, Owner's manual