

USB MIDI CONTROLLER INTRODUCTION

This is an ultra-compact MIDI controller which serves to control music software. It is equipped with 49 velocity-sensitive keys and 1 fader.

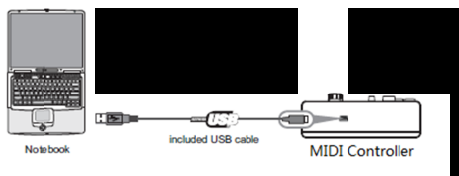
The controller connects both PC and Mac(OTG convertor cable is required for connecting to Mobile phone and Pad). You can do without a bulky power adapter as power supply is via the USB bus. The unit is supplied with a software editor which you can download from WORLDE website. The software editor will let you customize this USB MIDI controller to your own requirements. It's also available to download the full user manual and other setting instructions from www.worldde.com.cn.

3 STEPS FOR KS49C TO WORK

- 1) Connect your KS49C to the computer by USB cable.
- 2) Download the software editor from the download page of WORLDE website and customize all editable controllers, and create, save and load presets.
- 3) Open your DAW in your computer and select KS49C as your hardware controller in your DAW. Now you are ready to go.

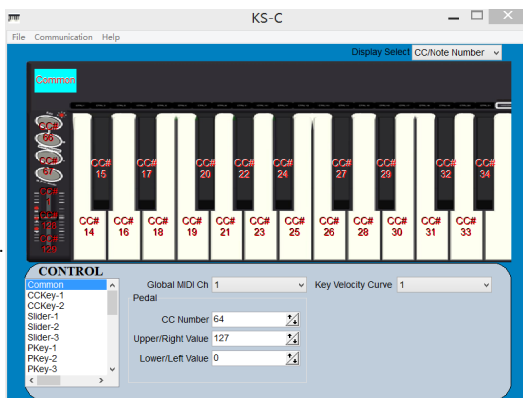
CONNECTING A COMPUTER

Use the included USB cable to connect the USB MIDI controller to a USB2.0 port on your computer. The power will turn on and the button LED backlit will light up when pressed. Select the KS49C as MIDI controller within your music software and you are ready to go.



FIRST STEPS WITH THE EDITOR

The editor will let you customize all editable controllers, and create, save and load presets. Make sure to download the software editor from www.worldde.com.cn. Always connect the KS49C to your computer before opening the editor. After opening the editor, click the control you would like to modify and edit its assignments in the pane. In order for your adjustments to be reflected in your MIDI Controller you will need to write the data into the controller. For this, select *Send to Keyboard* from the top menu bar. Make sure your DAW is not open when software editor is used or it will fail to send the data to KS49C.



DEVICE SETUP IN SOFTWARE

To select KS49C as a controller for your digital audio workstation (DAW):

1. Connect KS49C to your computer using a standard USB cable. (If you are connecting KS49C to a USB hub, make sure it is a powered hub. If another device with USB3.0 is connected to USB hub at the same time, KS49C will not work properly at this time.)
2. Open your DAW(make sure the software editor is closed before open the DAW).
3. Open your DAW's Preferences, Options, or Device Setup, select KS49C as your hardware controller, and then close that window. Your KS49C is now able to communicate with your software.

For more info of mapping setting of KS49C to DAW, please visit the download page of www.worldde.com.cn.

SYSTEM REQUIREMENTS

Windows 10/8/7/XP/Vista

Mac OS X 10.3.9 and better

All information is subject to change without prior notice.

Important: Visit worldde.com.cn to download the complete User Guide and Software application Mapping Setting Instructions.

TROUBLESHOOTING

PROBLEM	CAUSE	SOLUTION
The LED display does not light up	No power	Please make sure that the KS49C is connected to your computer by the USB cable and the computer is powered on. Sometimes change another USB cable or computer is needed to make sure if the USB cable is working fine.
No sound from KS49C	The KS49C is a MIDI-controller, which means that it does not contain any sounds inside.	Please make sure that the KS49C is connected to your computer or hardware sound module.
No sound from target device	KS49C is not properly connected.	Check your computer's USB connection to confirm that the KS49C is recognized. If necessary, replug the connection and restart your computer.
	KS49C connected after software application has started.	If controlling an external hardware module, make sure that the KS49C's MIDI OUT is connected to the device's MIDI IN port.
	Problem is caused by use of a USB hub.	Unplug the KS49C from the USB hub and connect directly to your computer.
	Software application not set to receive MIDI data from the KS49C.	Ensure that the KS49C or "USB" MIDI device is listed as an active MIDI source in your application. Usually, the MIDI settings can be accessed through the application's Preferences menu.
	KS49C'S MIDI channel is not the same as application's incoming MIDI channel.	Make sure that the KS49C is sending MIDI information on the channel that the target device expects.
Keys/ Sliders not work	Keys/ Sliders not set to mapping to your DAW	Please make sure you have set the KS49C to mapping to your DAW manually. For more mapping info please visit the download page of WORLDE website.
Drivers fail to install	Computer's got some problem on USB port	KS49C is driver free device, so basically no driver is required for this device. Please try to use the KS49C on another USB port or even on another computer.
KS49C fails to connect to computer	Fail to connect to computer	Check your computer's USB connection to confirm that the KS49C is recognized.
KS49C is not working properly with Software applications	Mapping Settings for KS49C to Software application is not finished.	The KS49C is compatible with any software(Such as Cubase, FL Studio, Bitwig, Ableton Live, Studio One, Nuendo, Protools, Logic Pro, Analog Lab and so on) which supports the MIDI protocol. Please consult your specific hardware or software device's documentation for instructions on enabling the KS49C as a MIDI input device.
CC No. of the Sliders, can't be changed	Software editor is not used properly.	Use the software editor to change the CC No. of the Knobs, Sliders, and pads.