

USB MIDI CONTROLLER INTRODUCTION

This is an ultra-compact and light-weight MIDI controller which serves to control music software. It is equipped with 25 velocity-sensitive keys(Easykey.25), 12 velocity-sensitive drum pads(Easypad.12) as well as 9 faders and 9 rotary controls(Easycontrol.9). The controller connects both PC and Mac(OTG convertor cable is required for connecting to Mobile phone and Pad). You can do without a bulky power adapter as power supply is via the USB bus.

The unit is supplied with a software editor which you can download from WORLDE website.

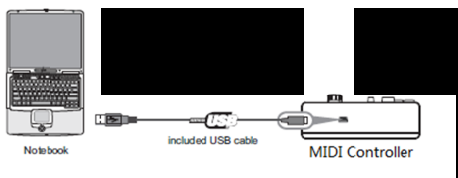
The software editor will let you customize this USB MIDI controller to your own requirements. It's also available to download the full user manual and other setting instructions from www.worlde.com.cn.

3 STEPS FOR EASY TO WORK

- 1)Connect your EASY to the computer by USB cable.
- 2)Download the software editor from the download page of WORLDE website and customize all editable controllers, and create, save and load presets.
- 3)Open your DAW in your computer and select EASY as your hardware controller in your DAW. Now you are ready to go.

CONNECTING A COMPUTER

Use the included USB cable to connect the USB MIDI controller to a USB2.0 port on your computer. The power will turn on and the scene LED will light up. Select the EASY as MIDI controller within your music software and you are ready to go.

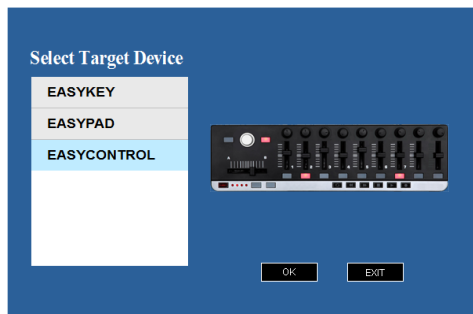


FIRST STEPS WITH THE EDITOR

The editor will let you customize all editable controllers, and create, save and load presets. Make sure to download the software editor from www.worlde.com.cn. Always connect the EASY to your computer before opening the editor.

After opening the editor, select the EASY device from the opening device select screen. In the main screen, click the control you would like to modify and edit its assignments in the lower right pane.

In order for your adjustments to be reflected in your MIDI controller you will need to write the data into the controller. For this, select *Communication > Send Scene Data* from the top menu bar. Make sure your DAW is not open when software editor is used or it will fail to send the data to EASY.



DEVICE SETUP IN SOFTWARE

To select EASY as a controller for your digital audio workstation (DAW):

1. Connect EASY to your computer using a standard USB cable. (If you are connecting EASY to a USB hub, make sure it is a powered hub. If another device with USB3.0 is connected to USB hub at the same time, EASY will not work properly at this time.)
2. Open your DAW(make sure the software editor is closed before open the DAW).
3. Open your DAW's Preferences, Options, or Device Setup, select EASY as your hardware controller, and then close that window. Your EASY is now able to communicate with your software.

For more info of mapping setting of EASY to DAW, please visit the download page of www.worlde.com.cn.

SYSTEM REQUIREMENTS

Windows 10/8/7/XP/Vista

Mac OS X 10.3.9 and better

All information is subject to change without prior notice.

Important: Visit worlde.com.cn to download the complete User Guide and Software application Mapping Setting Instructions.

TROUBLESHOOTING

| PROBLEM | CAUSE | SOLUTION |
|---|--|---|
| The LEDs does not light up | No power | Please make sure that the EASY is connected to your computer by the USB cable and the computer is powered on. Sometimes change another USB cable or computer is needed to make sure if the USB cable is working fine. |
| No sound from EASY | The EASY is a MIDI-controller, which means that it does not contain any sounds inside. | Please make sure that the EASY is connected to your computer or hardware sound module. |
| No sound from target device | EASY is not properly connected. | Check your computer's USB connection to confirm that the EASY is recognized. If necessary, replug the connection and restart your computer. |
| | EASY connected after software application has started. | If controlling an external hardware module, make sure that it's a USB Host supporting device. |
| | Problem is caused by use of a USB hub. | Unplug the EASY from the USB hub and connect directly to your computer. |
| | Software application not set to receive MIDI data from the EASY. | Ensure that the EASY or "USB" MIDI device is listed as an active MIDI source in your application. Usually, the MIDI settings can be accessed through the application's Preferences menu. |
| | EASY'S MIDI channel not the same as application's incoming MIDI channel. | Make sure that the EASY is sending MIDI information on the channel that the target device expects. |
| Keys/Pads/Knobs/Sliders not work | Keys/Pads/Knobs/Sliders not set to mapping to your DAW | Please make sure you have set the EASY to mapping to your DAW manually. For more mapping info please visit the download page of WORLDE website . |
| Drivers fail to install | Computer's got some problem on USB port | EASY is driver free device, so basically no driver is required for this device. Please try to use the EASY on another USB port or even on another computer. |
| EASY fails to connect to computer | Fail to connect to computer | Check your computer's USB connection to confirm that the EASY is recognized. |
| EASY is not working properly with Software applications | Mapping Settings for EASY to Software application is not finished. | The EASY is compatible with any software(Such as Cubase, FL Studio, Bitwig, Ableton Live, Studio One, Nuendo, Protools, Logic Pro, Analog Lab and so on) which supports the MIDI protocol. Please consult your specific hardware or software device's documentation for instructions on enabling the EASY as a MIDI input device. |
| CC No. of the Knobs, Sliders, Pads can't be changed | Software editor is not used properly. | Use the software editor to change the CC No. of the Knobs, Sliders, and pads. |